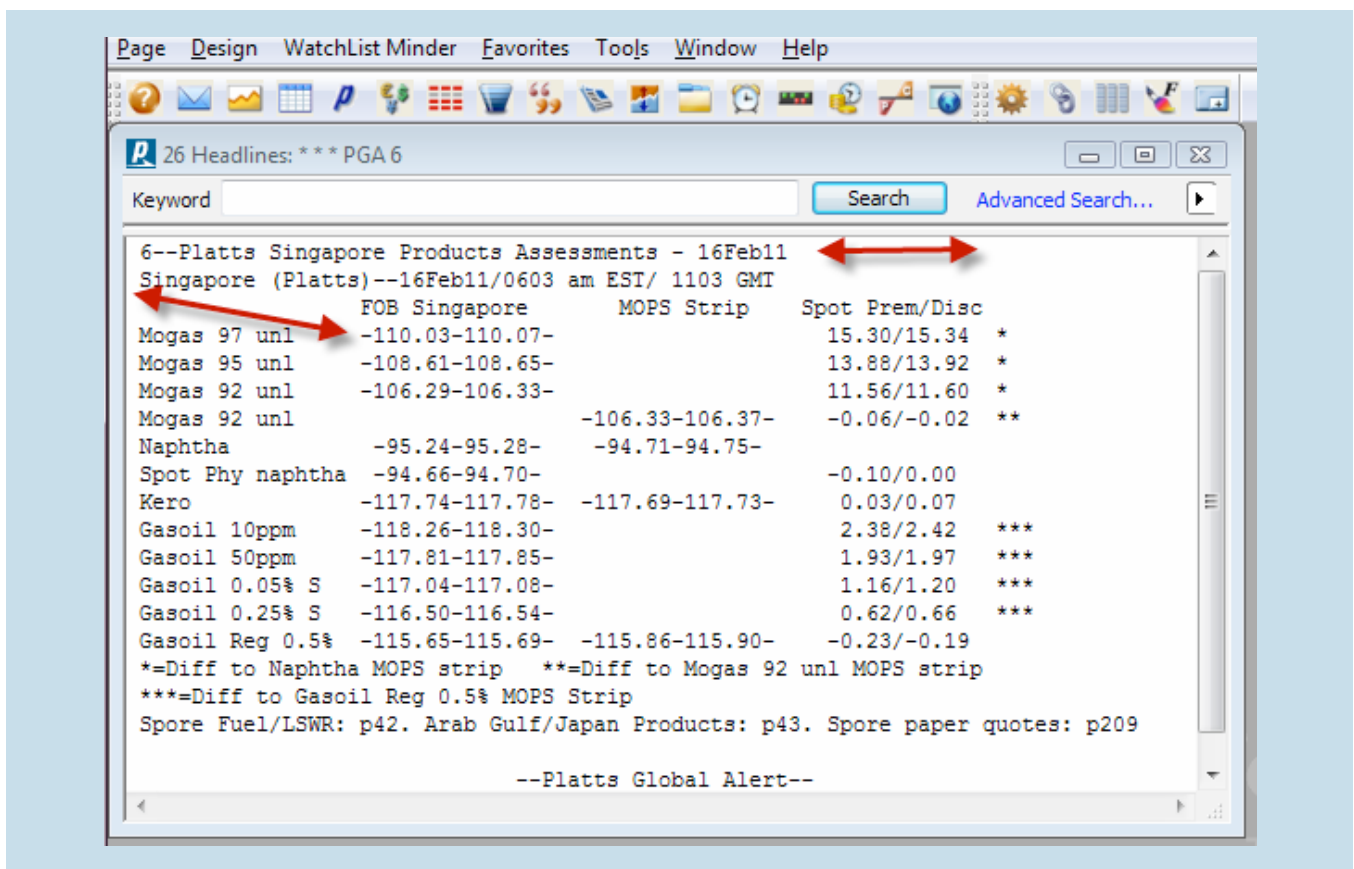


Add Platts Database to Alert Services

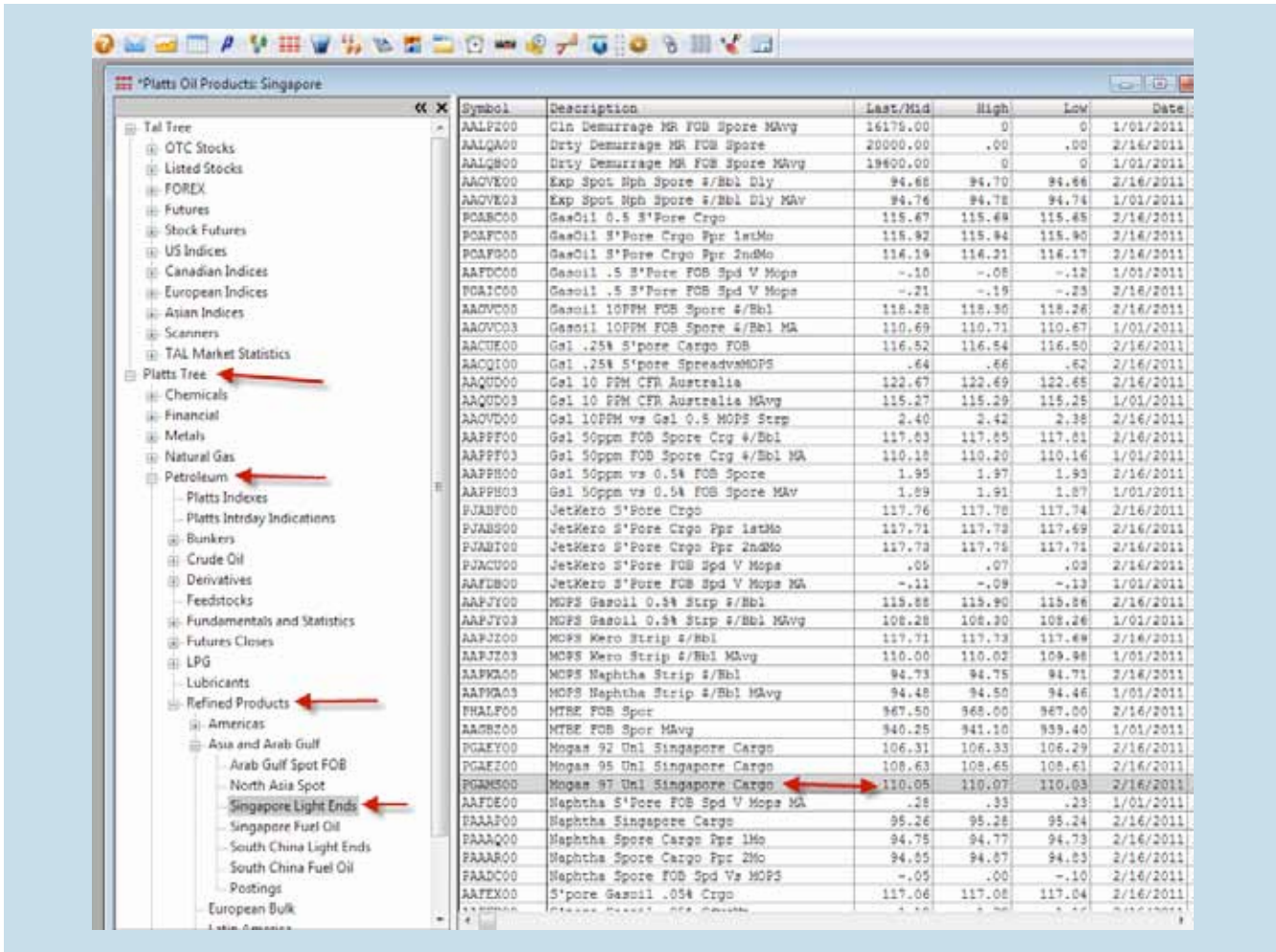
In addition to working within Platts Alert Services to keep abreast of the latest global news and events, daily market assessments are created by Platts editorial teams. These assessments are available in each Alert Service in text news format. By referring to the Page Directory, you will be able to pinpoint specific assessment pages you wish to track and set them up on a desktop.

As an example page 6 of PGA (Platts Global Alert) will populate daily after the Editors assess the market, in this case Singapore. To use Mogas 97 unleaded as an example the assessment indicated = 110.03 /l and 110.07 /h.



Adding Platts Database service, it is easy to retrieve historic information using the example of Singapore Mogas 97. Platts assigns a symbol (also known as code) to each assessment in the database. While there are many avenues to retrieve symbol information, using the Platts Symbol Tree within POTN is easy and effective. To access the Symbol Tree, select **Favorites > MarketMinder > Platts Symbol Tree**.

On the left side of the screen, open up the tree by selecting each level until the assessments you need appear on the right side. The display on the right will display all assessments within the category. Scroll down the description field until you find the assessment you need.



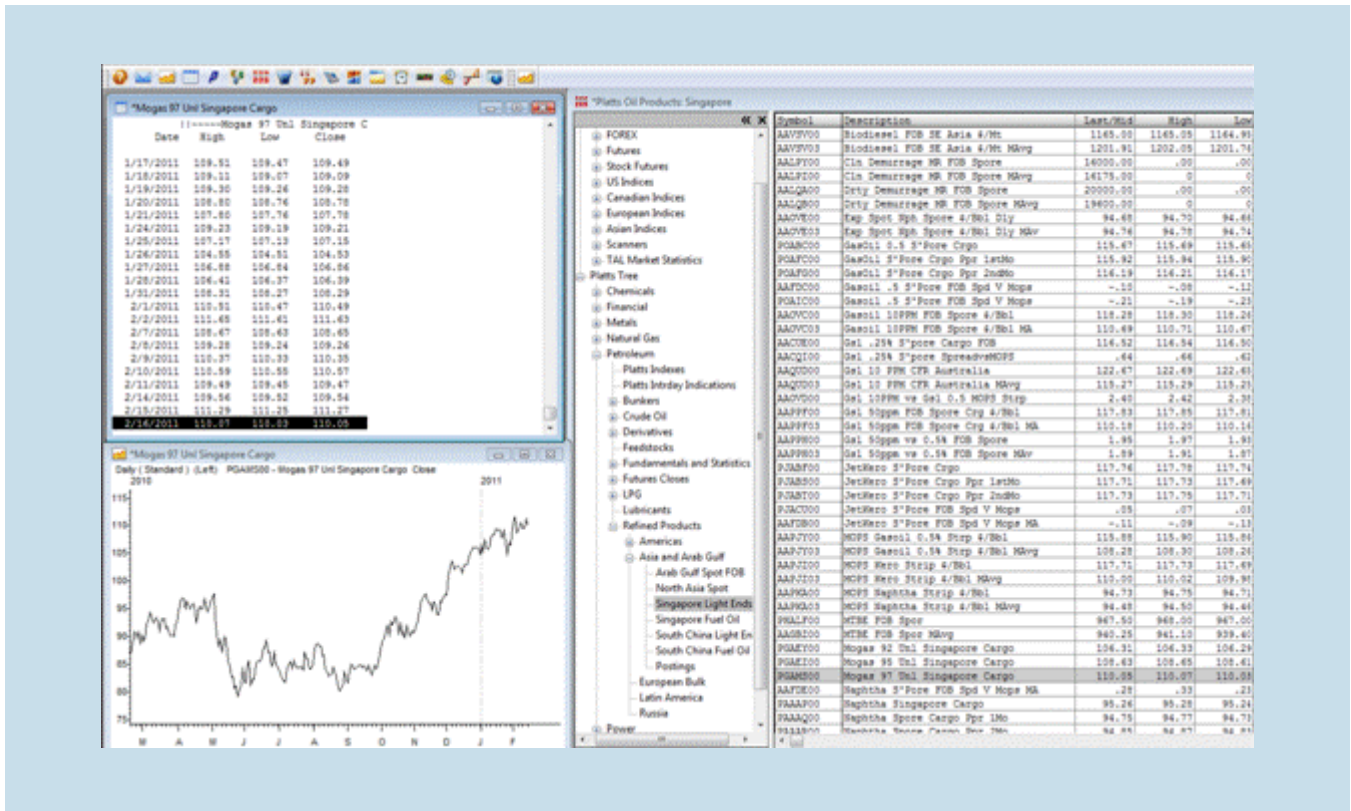
Note: The table can be sorted by setting the cursor on the field name at the top of a column. Right mouse click will display a pop-up with options for the table.

In the example, Mogas 97 shows the current assessment with date. It matches the assessment on the example PGA Page 6 above.

Tables and Charts can be easily created with a **drag/drop** function once the assessment is identified in the table.

Place the cursor over the target symbol and hold the left mouse down until the arrow turns into a circle with a line. Continue to hold the mouse down and drag it up to the table or chart icon.

As you hover over the chart or table icon, a drop-down will appear with pre-defined templates or Favorites. Slide the cursor over the desired template and release. The chart or table will appear on the desktop.



You can create a table by repeating the same steps above but substituting the Table icon for the Chart icon.

With two quick steps we have set up a table and a chart with historic information on the Mogas 97 assessment.

If you use this type of instant view often, it is suggested that you save this view as a desktop / page. Once saved, it is easy to drag any symbol over to a chart or table, which will then replace the data for a new view. If you would like to add a second symbol to the chart or table, hold the **Ctrl** key down while you drag the symbol over.

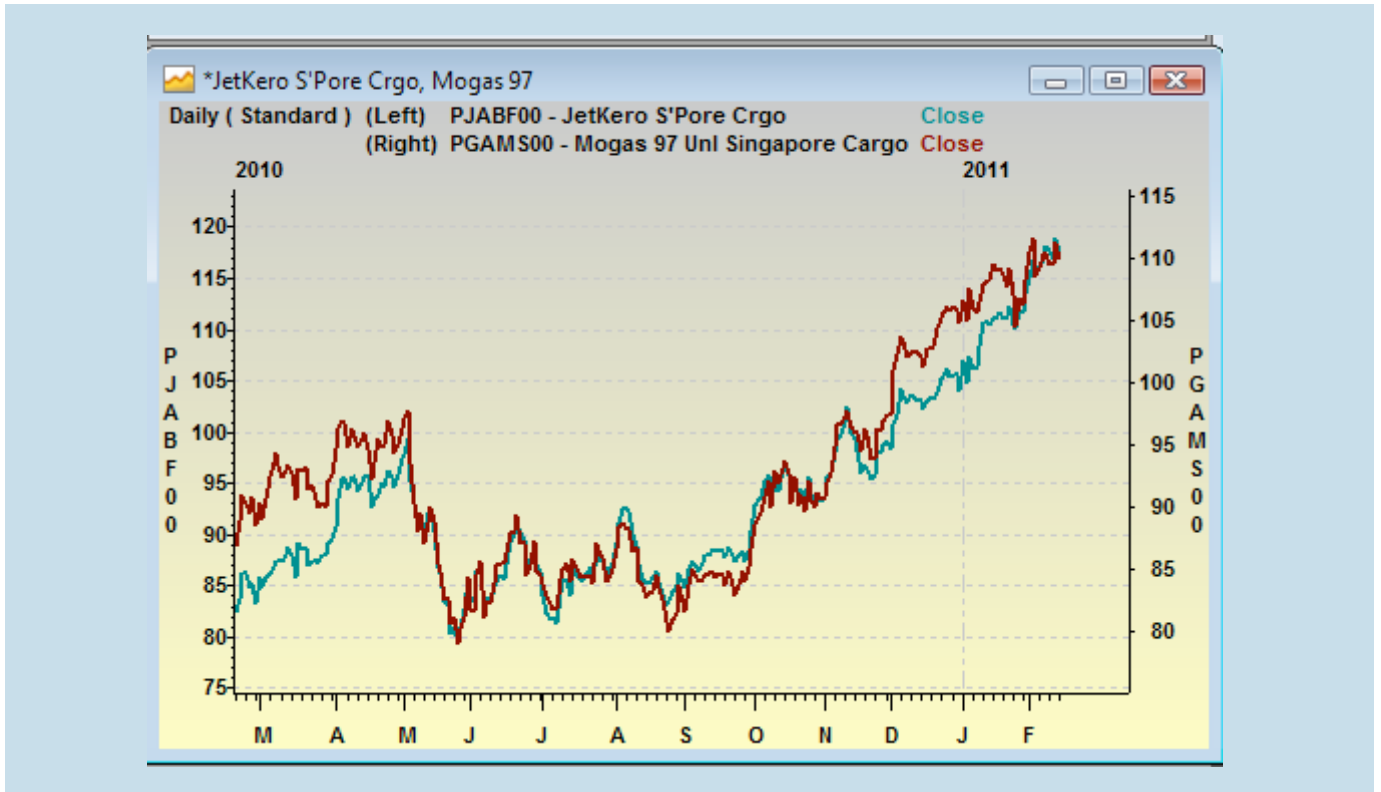
The examples below are basic. It is possible to add dimension and customize the charts and tables with color, line style change, time period displayed, overlaid studies, etc.

To activate the **customization window**, right mouse within the desired pane and select **Display and Analysis**. If you would like to re-use this format on another desktop, save it as a Favorite. To do this, select Favorites from the top bar and select Add To and add a name. This will save the format. When on a new desktop retrieve the saved format by selecting **Favorites > Charts** and the named format.



To customize a table, use the same steps as a chart. You will note the Display and Analysis window is very similar.

Simple Customized Chart



Simple Customized Table

Date	High	Low	Close
1/19/2011	109.30	109.26	109.28
1/20/2011	108.80	108.76	108.78
1/21/2011	107.80	107.76	107.78
1/24/2011	109.23	109.19	109.21
1/25/2011	107.17	107.13	107.15
1/26/2011	104.55	104.51	104.53
1/27/2011	106.88	106.84	106.86
1/28/2011	106.41	106.37	106.39
1/31/2011	108.31	108.27	108.29
2/1/2011	110.51	110.47	110.49
2/2/2011	111.65	111.61	111.63
2/7/2011	108.67	108.63	108.65
2/8/2011	109.28	109.24	109.26
2/9/2011	110.37	110.33	110.35
2/10/2011	110.59	110.55	110.57
2/11/2011	109.49	109.45	109.47
2/14/2011	109.56	109.52	109.54
2/15/2011	111.29	111.25	111.27
2/16/2011	110.07	110.03	110.05